

# Prospectus



Countesthorpe Academy



Respect / Resilience / Success



# Countesthorpe Academy

Show **Respect**  
Develop **Resilience**  
Achieve **Success**



## Contents

4	Introduction & Welcome
6	Our vision values & ethos
8	Our history, experience & facilities
10	Transition
11	Real life curriculum
12	Academic life Key Stage 3
14	Academic life Key Stage 4
15	The personal development programme
16	Working together
17	Expectations
18	Support
19	Provision for talented and gifted children
20	The HIVE Sixth Form
22	Creative and performing arts
24	Physical education and school sports
26	LiFE Multi Academy Trust
27	Practical details
Back page	Contact





## We exist for one reason

To help the children in our community become independent, capable, resilient young people, ready for life and work.

# Introduction

Mrs Aitcheson  
Headteacher

As your child embarks on the next stage of their educational journey the selection of the right school for your child is vital. The step up into secondary school can be challenging and exciting in equal measure, and we recognise that you are looking for a safe and friendly environment whilst at the same time an educational establishment that brings the best out in your child.

**At Countesthorpe Academy with everything we do, we aim for everyone in our school community to 'be the best they can be'.**

We want every student to be the very best version of themselves. We want our students to understand that ability is not fixed and through good teaching, responding to feedback and working hard, they will be successful. Building resilience is key to what we do and sits at the heart of our core values.

This Academy is about improving the prospects of your child. We want to develop capable, resilient, independent young people. This involves support and challenge, celebrating successes, and learning how to turn disappointments into opportunities to learn and grow. It's important that your child enjoys their time at Countesthorpe and are happy in their learning journey. To that end we foster a friendly yet robust culture where students feel part of the wider learning community, rise to challenges and enjoy success.

Children experience a tremendous change at their time in school, and we help to build confidence in those early years and lay firm foundations for the rest of their education. As they make their way through school, they need room to grow and develop as individuals. By the end of their time with us, you will be proud of who they've become.

**Every student is important to us, and everyone should experience a first class education, with high challenges and equally high expectations.**

Our belief is that every child has the potential to develop and to achieve highly. It is our role as teaching professionals to foster within them a deep passion for learning; our standards are high and so are our expectations. We monitor progress closely and reward success, we unearth talents and foster abilities. All our students benefit from first class facilities and opportunities that match their ambitions and open their eyes.

Being a student at Countesthorpe Academy means being part of a vibrant, thoughtful and caring community, with an emphasis on respect, resilience and success. We are proud of our students and staff.

We understand the importance of instilling a sense of community into students in our care, whilst at the same time ensuring that, when they leave us, they are ready to shape our world. With our new building, exciting and innovative curriculum, and pastoral care which sees everyone as an individual, I am confident that Countesthorpe Academy has the right learning environment to ensure that your child is successful.

# Welcome!

We want to develop capable, resilient, independent young people. This involves support and challenge, celebrating successes and learning how to turn disappointments into opportunities to learn and grow.







# What drives our success?

## Our vision

To inspire and enable all to be the best that they can be

## Our values

Through our actions and behaviours we will strive to build a learning community in which all:

- Show **Respect**
- Develop **Resilience**
- Achieve **Success**

## Our ethos

We do this through:

- Providing high quality learning opportunities
- Being a research informed school
- Delivering real life/innovative curriculum
- Our high expectations
- Being aspirational for our community
- Recognising success
- Developing leadership





# Our history, experience & facilities



Countesthorpe Academy has had a rich and varied history since its origins in the 1970s, and has been the subject of a number of differing educational styles and programmes.

Today Countesthorpe Academy can proudly acknowledge where success has been achieved and has learned from where things could be better. Today the Academy as part of the successful LiFE Multi Academy Trust has benefited from a huge investment in a new building, and outstanding facilities as well as highly qualified and committed teaching and support staff. Countesthorpe Academy is a successful and forward looking co-educational comprehensive school comprising of Key Stage 3, Key Stage 4, and the Hive Sixth Form, with over 1,200 students aged 11-19 in full time education.

Each year over 150 new students begin their journey with us in Year 7, while a similar number of older students join our thriving Sixth Form in Year 12, either by deciding to remain with us after GCSEs, or as new students from other schools. Our thorough induction programmes at each point of entry aim to ensure that all students feel welcome, regardless of when they begin their journey with us.

The local community enjoys the use of the academy's sporting, creative arts and social facilities, and our students benefit from involvement with many local community clubs, groups and societies.

We enjoy an ever-increasing reputation for the quality of teaching and learning in a friendly, caring and exciting environment. With experienced, well-qualified staff and excellent facilities, Countesthorpe Academy is able to provide a stimulating and fulfilling educational experience for everyone.



## Facilities

Situated on a large, pleasant campus on the edge of Countesthorpe village overlooking open countryside, the school enjoys the benefit of light, new and modernised, well-equipped buildings.

There are specialist teaching areas, which are grouped together in subject and faculty areas so that resources can be effectively utilised. The school has embraced the many benefits that IT, digital and hand-held computer devices have to offer in supporting student learning, and the whole school enjoys the support of an efficient world class IT infrastructure.

**The campus areas of specialism based in faculties are:**

- Communication (English, Modern Foreign Languages, Media)
- Cultural (History, Geography, Religious Education, Sociology, Psychology, Health)
- Maths, Business and Enterprise
- Science
- Performance (Physical Education, Dance, Drama, Design, Music, Vocational)

In our Performance faculty, students enjoy a well-equipped sports hall, gymnasium, activity studio, tennis courts and extensive playing fields. There are specialist Drama and theatre studios, Music rehearsal rooms, and a recording studio. Media Studies have a contemporary and professionally well-equipped 'Media suite' for outstanding video and digital media production.

**At the heart of the school is the well-stocked library, open everyday to provide resources, facilities and guidance to support and enhance the curriculum, independent learning and encourage reading for pleasure.**

The Academy's commitment to investment means our resource collection is continually developing to provide the best books and electronic resources to support our students and our librarian is available to help them find what they need.

## Belonging to something special

### The House System

In addition to their year group, students will be placed into one of the six Houses in the Academy. Houses are made up of students from years 7-13. Each child will be in a tutor group made up only of children in the same year. Our House system helps to foster a sense of community, belonging, engagement and support. There will be opportunities for inter-house competitions, special house events, trips and student responsibilities.

All students have access to a wide range of support across the whole school; including teachers, tutors, pastoral staff and the senior leadership team.

**WILBERFORCE  
BRUNEL  
HAWKINS**      **LAWRENCE  
SPENCER  
TURING**

The house names have been carefully selected to reflect our core school values and each figurehead represents something special to us.

Step-up-to-secondary 'Buddies' will be on hand throughout Step-up-to-secondary Induction Days and the Autumn Term to support Year 7s in getting to know the layout and routines of the Academy.





# Transition

The move from primary school to secondary school can be an apprehensive time for both the child and their parents. Our transition programme is designed to smooth the process, alleviate any fears and encourage a feeling of excitement and anticipation. We get to know every student who will be attending our school, understanding the things they enjoy and any support they might need before they arrive. We use this to get to know their needs and aspirations, and to enable us to tailor their experience.

Every child has a unique skill, talent or gift and by recognising their strengths every single student success can be shared and celebrated. This excellence may be identified through either academic success, or enrichment and enterprise activities that we offer.

## Supporting your child to solve problems independently

We understand that moving school is a big change for 11 year olds and their parents. Sometimes students need some extra help or support.

Please support us in making sure your child makes this adjustment to secondary school as smoothly as possible.

If there is an issue, please encourage your child to take steps to resolve the issue themselves by:

- Speaking to an adult in the Academy when the problem occurs
- Not to contact you directly in the day but wait until they get home

Please trust that we will contact you if necessary and we will always work and make decisions in the best educational interests of your child.

Our own Sixth Form students remain in education because they choose to, and act as outstanding role models for younger students. Our motivated Sixth Form students have been highly successful, and are aspiring to great things. Having older students on site helps to inspire younger students ambition and have higher expectations.



# Real life curriculum

## What is the Real LiFE Curriculum?

This progressive and exciting model of teaching and learning is heavily influenced by incredibly successful schools across the globe and brings learning to life like never before. It is based on the latest global educational research and is geared towards preparing our students to thrive in an ever changing and unpredictable world. Through this curriculum model, our students will learn much more than facts; they learn to develop a wide range of skills and competencies that will enable them to contribute positively to the world around them.

### How is this different to a traditional curriculum?

The real world doesn't fit neatly into isolated subject areas, so understanding facts about these subjects in isolation is not enough to fully thrive in the modern world. In addition, students throughout history have often questioned the relevance of some of the things they were being taught. The Real LiFE Curriculum addresses both these issues by taking students on skilfully planned multi-disciplinary learning journeys that are based on real life situations and experiences.

### How will this work?

All Real LiFE Curriculum learning journeys are written by subject specialists who work collaboratively to plan and deliver each activity to make sure everything is truly relevant and fully prepares the students to be able to apply their knowledge later on. The learning journeys start with an immersive experience and culminate with students developing a final product that is showcased via an event or exhibition. Regular enhanced personalised coaching sessions are given to each student to help them develop in areas such as character, creativity and critical thinking, which enables them to improve their ability to work independently towards achieving challenging personal goals.

### Can you give me a specific example of what this might look like?

An example of a typical learning journey is "Harnessing the Wind" where we use film and literature to explore the issues of deforestation, drought, poverty and famine in developing countries. Students are then taught the Scientific, Design, Engineering and Mathematical skills required to build a working scale model of a wind turbine that could be used to support communities who live in remote rural areas with no access to a reliable supply of electricity.

### How will we know these students are making good progress?

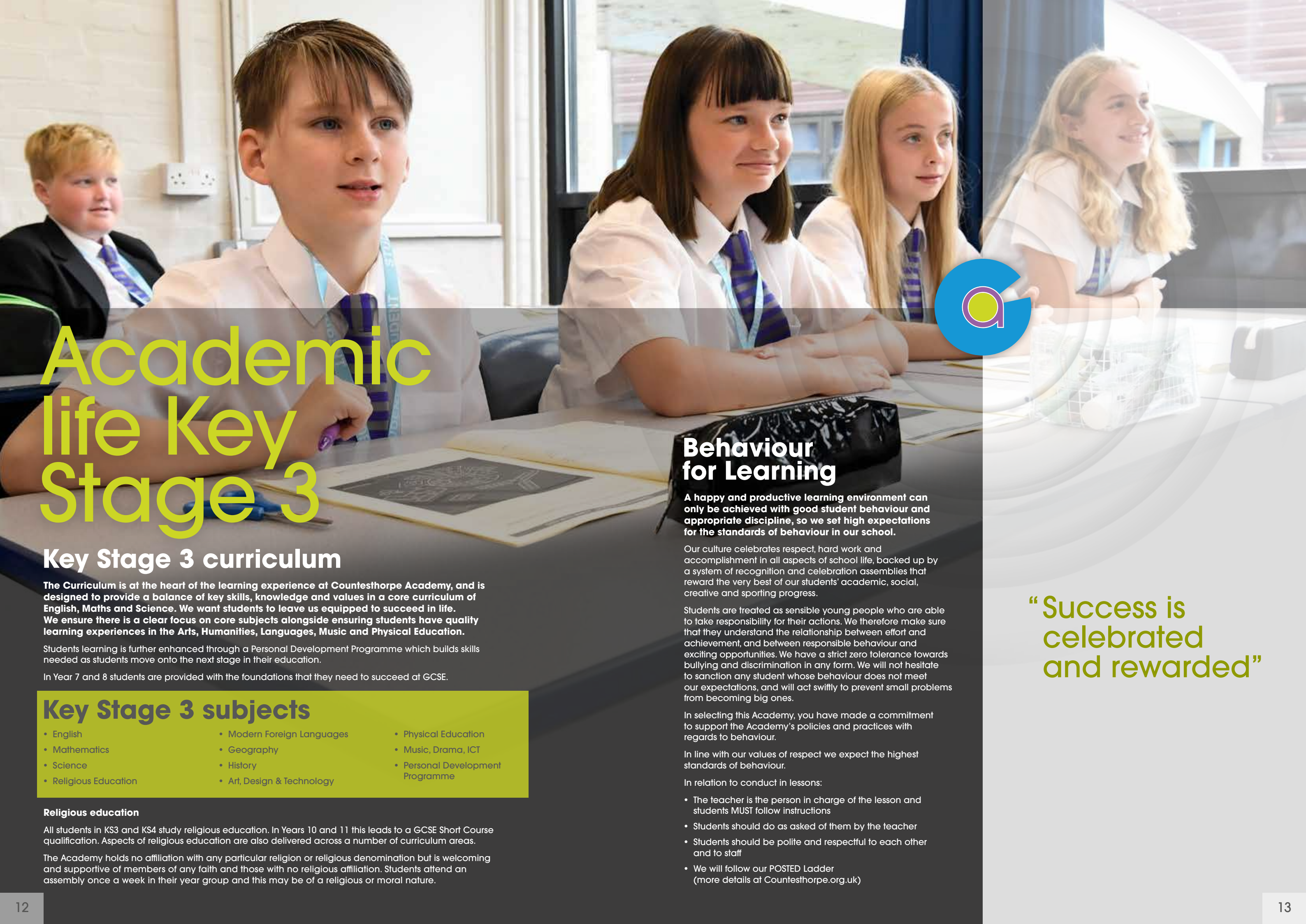
Personalised coaching sessions ensure that both staff and students are regularly involved in monitoring progress towards their individual goals and that future goals are challenging, yet achievable. Although written testing remains part of the assessment process, there is a greater emphasis on assessing the quality of preparation that students put into their showcase or exhibition, and their ongoing commitment to reflecting on what they have done so far to refine and improve their work until it is of a standard they can be proud of.

### How will this curriculum fit in with GCSEs?

The Real LiFE Curriculum is designed to be delivered during Key Stage 3 in our secondary schools. After this stage students will opt for GCSE subjects in the same way as the students who follow the traditional curriculum. We are confident that students who follow the Real LiFE curriculum will demonstrate high levels of independent learning and may be afforded greater flexibility in terms of their GCSE choices such as the ability to study for additional subjects. This will be determined on a case by case basis during the GCSE options process.







# Academic life Key Stage 3

## Key Stage 3 curriculum

The Curriculum is at the heart of the learning experience at Countesthorpe Academy, and is designed to provide a balance of key skills, knowledge and values in a core curriculum of English, Maths and Science. We want students to leave us equipped to succeed in life. We ensure there is a clear focus on core subjects alongside ensuring students have quality learning experiences in the Arts, Humanities, Languages, Music and Physical Education.

Students learning is further enhanced through a Personal Development Programme which builds skills needed as students move onto the next stage in their education.

In Year 7 and 8 students are provided with the foundations that they need to succeed at GCSE.

## Key Stage 3 subjects

- |                       |                            |                                  |
|-----------------------|----------------------------|----------------------------------|
| • English             | • Modern Foreign Languages | • Physical Education             |
| • Mathematics         | • Geography                | • Music, Drama, ICT              |
| • Science             | • History                  | • Personal Development Programme |
| • Religious Education | • Art, Design & Technology |                                  |

### Religious education

All students in KS3 and KS4 study religious education. In Years 10 and 11 this leads to a GCSE Short Course qualification. Aspects of religious education are also delivered across a number of curriculum areas.

The Academy holds no affiliation with any particular religion or religious denomination but is welcoming and supportive of members of any faith and those with no religious affiliation. Students attend an assembly once a week in their year group and this may be of a religious or moral nature.

## Behaviour for Learning

A happy and productive learning environment can only be achieved with good student behaviour and appropriate discipline, so we set high expectations for the standards of behaviour in our school.

Our culture celebrates respect, hard work and accomplishment in all aspects of school life, backed up by a system of recognition and celebration assemblies that reward the very best of our students' academic, social, creative and sporting progress.

Students are treated as sensible young people who are able to take responsibility for their actions. We therefore make sure that they understand the relationship between effort and achievement, and between responsible behaviour and exciting opportunities. We have a strict zero tolerance towards bullying and discrimination in any form. We will not hesitate to sanction any student whose behaviour does not meet our expectations, and will act swiftly to prevent small problems from becoming big ones.

In selecting this Academy, you have made a commitment to support the Academy's policies and practices with regards to behaviour.

In line with our values of respect we expect the highest standards of behaviour.

In relation to conduct in lessons:

- The teacher is the person in charge of the lesson and students MUST follow instructions
- Students should do as asked of them by the teacher
- Students should be polite and respectful to each other and to staff
- We will follow our POSTED Ladder (more details at [Countesthorpe.org.uk](http://Countesthorpe.org.uk))

“Success is  
celebrated  
and rewarded”



# Academic life Key Stage 4

## Key Stage 4 curriculum

To allow all students to be equipped for the next stage in their education or transition into the world of work, the school strives to provide all students with a comprehensive learning experience which puts into practice our aims and keeps future educational and career opportunities as open as possible.

For this reason, all students follow a broad and balanced curriculum from entry in Year 10 through and into the Sixth Form, although every effort is made to ensure the curriculum reflects students' interests, aspirations and abilities.

Students are directed to make choices from one of three pathways which have been designed to ensure that all students have a curriculum which suits their individual needs. Each student will receive personalised advice and guidance on which options suits their personal aspiration.

In Year 9, students are given an element of choice.

## Key Stage 4 Subjects

### Compulsory Subjects:

• English Language, English Literature, Maths, Science, PE, Religious Education, Personal Development Programme.

### Option Subjects:

- BTEC Level 1 / 2 Tech Award in Health & Social Care
- BTEC Level 1 / 2 Tech Award in Performing Arts (Dance)
- Cambridge National Creative iMedia
- GCSE Art

- GCSE Business Studies
- GCSE Computer Science
- GCSE Design & Technology: Resistant Materials
- GCSE Drama
- GCSE French
- GCSE Geography
- GCSE History
- GCSE Media Studies
- GCSE Music
- GCSE Spanish

- GCSE Textiles
- Level 1 / 2 Vocational Award in Hospitality & Catering
- OCR Cambridge National - Sport Studies

### Level 1 Courses, where appropriate, in:

- ABC Motor Vehicle Studies
- BTEC Level 1 Certificate in Construction
- VTCT Level 1 Certificate in Hair and Beauty Skills

Students at Countesthorpe Academy work towards GCSE courses in Year 9 so that when they make their option choices for Years 10 and 11 they are well informed about the skills needed in each subject and what they will be learning.

In Years 10 and 11, we offer a wide choice of GCSE and BTEC courses alongside more vocational courses and the offer can be personalised depending on the skills and aptitude of the individual student. Beyond 16 the Academy offers A-Level and BTEC courses alongside a core curriculum.

“Social, moral, spiritual and cultural development is at the core of the programme.”

## The personal development programme

The emphasis we place at Countesthorpe Academy on developing the wellbeing of our students is what creates our ethos of personal confidence and community action. The Personal Development Programme (PDP) is a core element of the curriculum which encompasses three main strands:

- Citizenship education;
- Personal, Social, Health and Economic education;
- Careers education.

The programme seeks to enhance students' understanding of their community at a local, national and global level. It also aims to help students to feel positive about themselves and enjoy healthy, safe, responsible and fulfilled lives. Social, moral, spiritual and cultural development is at the core of the programme, along with developing the character muscles essential for resilience. The college encourages students to take an interest in topical and controversial issues, to engage in discussion and debate, and to be an active citizen. It also prepares them for the opportunities and challenges of the workplace and equips them to deal with pressures and opportunities in the wider world.

### Across the three years, students will reflect upon and study these areas:

- Staying safe;
- Respectful relationships;
- Diversity, British values and society in the UK;
- Internet culture and safety;
- Active citizenship and democracy;
- Equality, tolerance and respect;
- Good mental health and resilience;
- Challenges facing the international community, such as the use of child soldiers and global inequality.







# Working together

## Doing the right thing

We have designed a curriculum and developed a culture with the school to achieve the best for your child with support, opportunities, setting of high standards and rigorously following through on our plans.

**We are committed to success and achievement, but we don't do it alone.**

We are clear what we expect from students, and they are clear what they can expect from us. Education is a partnership, and a vital part of that partnership is parents. We will make sure you know exactly what is happening with your child, and we'll work closely with you.

Partnerships start with a conversation, and we welcome direct contact with parents regarding all aspects of your child's time with Countesthorpe Academy.

### Home working

There is a high expectation for our students to engage in study at home, as it is not possible or desirable to complete the work for any examination course in the lessons alone. The amount of home working will vary from subject to subject and week to week, and our home learning policy is designed to encourage students to have the responsibility of managing their own time.

We aim to set assignments that will extend and complement the work undertaken in class and we value the support of parents and guardians in achieving this aim.

Homework is recorded electronically by staff using Satchel One which complements our use of learning technologies. This enables us much greater flexibility when setting assignments and projects which can now extend far beyond traditional paper based tasks. Satchel One also allows students to keep track of their progress and meet deadlines while enabling parents and guardians to remain informed about the work that has been set.

### Reporting and target setting

Students in all year groups have formal assessment points throughout the year and reports are sent home at regular intervals. Parents' Evenings held throughout the year provides an opportunity to discuss your child's progress with their tutors and year head. As a parent we encourage you to access data about your child's attendance, progress and effort via our Online Reporting system – My Ed.

Online Reporting [www.myedschoolapp.com](http://www.myedschoolapp.com)

In addition, we will use email and SMS links to keep you abreast of performance as required.

### Recognition

Student achievement is celebrated throughout the year. Students accumulate Value and House Points which contribute to individual and group recognition and success. We recognise students who meet our expectations, work hard and 'do the right thing'.

Our highly prized recognition programme includes:

- Vouchers
- Certificates
- Awards Evenings
- Trips and Events.

### Reward Events

Each term students receive an invitation to the Recognition Event based on their attendance and conduct.

### Meeting expectations in lessons

To encourage success, three Recognition Events are held each year, to allow those students who make significant positive change or progress in attitude, behaviour and attendance to be recognised. Students who are in danger of not receiving an invitation to a Recognition Event will be informed with enough time to change their conduct and attendance to make a difference.

**“We recognise students who meet our expectations, work hard and do the right thing”**

# Expectations



At Countesthorpe Academy we work to improve the success and prospects of your child. We want to develop capable, resilient and independent young people. This involves support and challenge, celebrating successes and learning how to deal with disappointments, and most importantly how to learn from them.

**We cannot achieve this alone, and we need your support in encouraging your child to demonstrate the core values of the academy.**

At Countesthorpe Academy, we are all learners. We practise and embed our core values of showing respect, developing resilience and achieving success, in everything we do.

Countesthorpe Academy:

- Provides high quality learning opportunities
- Is a research informed school
- Delivers a real life / innovative curriculum
- Has high expectations
- Is aspirational for our community
- Recognises success
- Develops leadership





# Support

Many young people experience some difficulties, whether that be with relationships or learning, at some stage in their school career. Across the country, one child in five is recognised to have some kind of special educational need at one time or another. Whatever the nature and cause of their difficulties, such students need extra help and support with their education.

All our students are entitled to the best educational experience we can provide, irrespective of their academic ability.

We aim to provide a climate in the Academy where students with special educational needs feel welcomed and supported. We aim for an environment where vulnerable students feel safe and class teachers are known to be approachable by both students and their parents or guardians.

All students on the special needs record have a pastoral link through the SENCO (Special Educational Needs Coordinator).

A copy of our policy document can be obtained from the Academy reception or [Countesthorpe.org.uk](http://Countesthorpe.org.uk)



# Highly aspirational

Students are challenged and encouraged to recognise and realise their potential in a range of different areas, whether it be academic, sporting, artistic or vocational achievement. Success is celebrated regardless of direction. We support our high achieving students through our Gifted and Talented programme whose underlying principle is that of high expectation and aspiration.

Those who demonstrate high academic potential, and the will to succeed are supported through a range of challenging and focused learning activities and provided with inspirational extra-curricular activities ranging from university visits to Oxbridge conferences and summer schools at Russell Group Universities, to mock entrance exams and interviews.

Personalised intervention opportunities ensure that we stretch and extend our students to deepen their learning and thinking. We understand that high achievement is not just confined to the classroom and we tailor our support according to students' skills.







# HIVE Sixth Form



Progression into the Sixth Form is a big decision and one that needs considering early in your child's academic career. The Hive Sixth Form students enjoy wide range of courses and a pathway to achieve individual success in whatever their chosen field.

The examination results achieved by our students speak for themselves, with many of Countesthorpe alumni going onto some of the top UK universities and securing rewarding employment opportunities with leading multi-national companies.

The Hive Sixth Form is the perfect size to maintain the broad range of subject choice, whilst being intimate enough to allow each and every student to receive individual support, encouragement and guidance to allow them to achieve success.

The Academy strongly values careers education, and employability skills are firmly embedded in the curriculum. The Academy has developed numerous links with top UK universities, leading local business as well as the broader community providing opportunities for students to progress into higher education or the world of work.







# Creative and performing arts

The Academy enjoys a thriving culture of performing arts which comprises of lessons in drama, dance and music as well as many enrichment and extra-curricular opportunities.

The newly opened activity studio will form a centre piece for expressive and collaborative performances at the heart of the school. Regular theatrical productions take place in our fully equipped theatre.



# Developing confidence and resilience







## Physical education and school sports

Integral to the Countesthorpe experience is Physical education, where knowledge, skills and values established through physical education can be directly transferred across the curriculum and into school life.

The Academy has excellent facilities for physical education and school sport, including a multi-purpose sports hall, a traditional gymnasium, an activity studio, tennis courts, basketball and netball court, and extensive playing fields.

The physical education department believe that everyone has a right to a positive experience of physical education and school sport.

Lunchtime and after school activities provide opportunities for students of all abilities to try new activities, or continue with well established ones.

Many of our students belong to local sports clubs. Several students have links with local centres of sporting excellence, and have achieved outstanding success across a broad range of sports.

The Academy believes physical education is not just about physical ability, it helps to develop interactive social communication and leadership skills which play an important part in life.

**Happy, healthy and well-rounded students.**



## Links with the community

Education is not limited to the environs of the school alone, and students are encouraged to become involved with the wider community in a variety of ways. Countesthorpe Academy's long standing links with the wider community including business, social, leisure and educational establishments, allow students to benefit from involvement with a broad and varied range of groups.

Collaboration and involvement helps to develop students into successful and engaged members of the community.



## Out of hours learning

Established as a community college, Countesthorpe Academy has a long history of providing a range of sport, health and fitness and extra-curricular classes to local community users as well as students. This has led to a mix of activities being enjoyed by members of the wider community, and so enriches the learning environment. We believe that learning is a life-long activity.

There is an on-site nursery for details [nursery.countesthorpe.cc](http://nursery.countesthorpe.cc)

**SPORTS HALL**  
**TENNIS COURT**

**THEATRE**  
**DANCE STUDIO**  
**MEETING ROOMS**





## LiFE Academy Trust

We are a medium sized Trust, consisting of six Secondary Schools – Ashby School, Bosworth Academy, Countesthorpe Academy, Ibstock Community College, Ivanhoe College, Winstanley School and currently two Primary Schools – Braunstone Frith Primary Academy and Kingsway Primary School.

### Vision

- We have a compelling desire to provide high quality, personalised and rounded education for everyone, right in the heart of our local community. We believe that no school can be deemed successful unless all those around it are also successful, popular and flourishing. Hence, we believe that dynamic, mutually accountable collaboration and challenge between local schools as members of the LIFE MAT is the cornerstone of our future success.
- Each school is seen as a leader of and vital to its local community; each school is regarded as fundamental to the identity of its surrounding community.

### Values

- Ensuring that every student achieves positive, life changing outcomes.
- Providing a whole education; academic excellence co-existing with an exceptional commitment to activity beyond.
- The relentless pursuit of excellence by; expecting this of every person, every day; recognising and celebrating behaviours that lead to great progress, and promoting and celebrating elite performance inside school, and in the wider world.
- Valuing the diversity and qualities of our staff and students.
- Ensuring that all students and staff feel known, appreciated and supported.
- Committing whole-heartedly to collaboration within, between and beyond our academies.

### Mission

- Outcomes equal to the best nationally and internationally for every school and every child.
- Every child receives a truly rounded education resulting in a strong moral compass, a globally competitive skill set, and a confident sense of self.
- Every school is a hub for community activities, a centre for extended services, and a source of immense pride for students, their families and other local stakeholders.
- Providing high quality buildings, engaging classrooms and excellent sporting facilities.
- Delivering innovative learning resources and materials.
- Ensuring a well-disciplined and caring environment.
- Exploiting cutting edge technologies to expand the opportunities for students, staff and our community to benefit from learning in a digital age.



## Practical data

### Admissions

Countesthorpe Academy is always open to applications from students wishing to study with us at Key Stage 3, 4 or at Sixth Form.

Students are admitted to Countesthorpe Academy in accordance with the Leicestershire Local Authority (LA).

Priority for admission is given to the children of parents who live in our catchment area as currently designated by the LA. This includes the villages of Countesthorpe, Blaby, Arnesby, Shearsby, Kilby, Foston, Peatling Magna, Broughton Astley, Cosby, Whetstone, Sutton in the Elms and Glen Parva.

We are always happy to consider applications from parents who reside outside this catchment area and we receive a number each year. This provision is made assuming that there are places within our planned admission number, which is the number of students in Year 7 that the Academy can take. Contact the Academy in the first instance if you would like further information, be put on our mailing list for out of catchment, or to arrange a visit to see the Academy in action.

### Uniform and dress code

The academy operates a strict uniform code for all KS3 and KS4 students, and a dress code for our Sixth Form students providing all with a sense of belonging and pride in their school community.

For details [clcc.college/uniform-information/](http://clcc.college/uniform-information/)

### Catering

The academy offers students a wide choice of nutritious breakfast, lunch and snack menus delivered by expertly qualified catering staff from a range of catering outlets including the kitchen server, snack bar and the popular Spud Hut.

For details [clcc.college/parents/food-menus/](http://clcc.college/parents/food-menus/)

### Transport

There are many bus services that provide transport to and from Countesthorpe Academy. Whilst we do not procure or manage these services, we are happy to provide links to their websites so that you can choose the bus service that suits your child's needs best.

Our aim is for every student to thrive at Countesthorpe Academy both academically and as an individual. We operate a robust anti-bullying policy and although rare we take any instance of concern seriously and support every child in our care.

**For all other aspects of life at Countesthorpe Academy  
 learn more at [countesthorpe.org.uk](http://countesthorpe.org.uk)**





# Social media

Search for Countesthorpe Academy



## Countesthorpe Academy

Winchester Road,  
Countesthorpe,  
Leicestershire,  
LE8 5PR

Tel: 0116 2771555

Email: [admin@countesthorpe.org.uk](mailto:admin@countesthorpe.org.uk)

[www.countesthorpe.org.uk](http://www.countesthorpe.org.uk)

---

### Term time opening hours

Mon to Thur	08:00 to 16:30
Friday	08:00 TO 16:00

---

Countesthorpe Academy is part of  
the **LiFE Multi Academy Trust**

**LiFE**  
Inspiration Innovation Integrity

We have a compelling desire to provide high quality, personalised and rounded education for everyone, right in the heart of our local community.