

# CLCC WEEKLY BULLETIN

<p><b>Monday</b> <b>24<sup>th</sup> September</b></p>	<p>Lunchtime Lunchtime Lunchtime 15.00-16.00 15.00-16.00 15.00-16.00 15.15-16.15</p>	<p>Year 11 Table tennis – Leysland site – (DBU/MPA/NWI) Year 7 Football – Countesthorpe site – (NWI/LMY) Music Tech Club – MU3C Drop in Media Catch Up and Revision session – IT3 Dance Club – all years – Countesthorpe site (LMY/SMA/GBU) Riders Basketball – Countesthorpe site sports hall Staff Singing Club – music rooms</p>
<p><b>Tuesday</b> <b>25<sup>th</sup> September</b></p>	<p>Lunchtime Lunchtime Lunchtime Period 5 15.00-16.00 15.00-16.00 15.00-16.00 15.00-16.00 15.00-16.00 15.00-16.00 15.00-16.00 15.15-17.15</p>	<p>* Discovery &amp; Impact Christian Club Year 10 table tennis – Leysland site (KAR/STE) Year 11 8 football – Countesthorpe site (NWI/KAR) Tutor period Homework Club – IT3C – open to all years Orchestra (MU2C) KS3 Boys football – Leysland site (NWI,DBU,KAR) KS3 Girls Netball – Leysland site (LMY,STE,SMA) KS3 only – Develop your own IT Apps (IT1C) Biology Intervention – S6C Year 10/11 Basketball – Countesthorpe site KS3 football &amp; netball vs Robert Smyth (<b>away</b>)</p>
<p><b>Wednesday</b> <b>26<sup>th</sup> September</b></p>	<p>Lunchtime Lunchtime Lunchtime Lunchtime Lunchtime 15.15-17.00</p>	<p>Music Theory – drop in session Music Tech Club – Music block Year 9 table tennis – Leysland site (STE/NWI) Year 9 football – Countesthorpe site (LMY/DBU) Book Club – E7C KS4 football &amp; netball vs Robert Smyth (<b>home</b>)</p>
<p><b>Thursday</b> <b>27<sup>th</sup> September</b></p>	<p>Lunchtime Lunchtime Lunchtime Lunchtime 15.00-16.00 15.00-16.00 15.00- 15.00-16.00 15.00-16.00 15.00-16.00 15.00-16.00 15.00-16.00 15.00-16.00 15.00-16.00 14.45-17.00</p>	<p>Year 8 table tennis – Leysland site (SMA/KAR) Year 10 football – Countesthorpe site (AHU/SMA) Craft Club – E11C – Mrs Caleb Musical Theatre Theatre Tech Club – CCC Theatre Drop in Media Catch Up and Revision session – IT3 Homework Club – IT3C – open to all years Choir (MU2C) KS4 Boys football – Leysland site (NWI,KAR) KS4 Girls Netball – Leysland site (SMA) KS3 Girls Football – Leysland site (STE) KS3 Rugby – Leysland site (DBU) A level physics and chemistry intervention in S3/4C Year 8/9 Basketball – Countesthorpe site Year 12 &amp; 13 Chemistry Support Drop in Session – S3C</p>
<p><b>Friday</b> <b>28<sup>th</sup> September</b></p>	<p>Lunchtime Lunchtime 15.00-16.00 15.00- 15.00-17.25 15.15</p>	<p>Year 7 table tennis – Leysland site (KAR/DBU/STE) Year 11 football – Countesthorpe site (DBU/NWI) Year 7 and 8 Science Club – S3C Board game club – invite only Film Club– Countesthorpe Site – Iron Man Staff Football</p>

**\* The Discovery & Impact Christian Lunch Group (more info)**

Discovery meets every Tuesday lunchtime in Leysland Meeting Room for those students having lunch at Leysland and then in SF5 for students having a Countesthorpe lunchbreak. Come and join us for games, discussion and to explore the Christian faith in a fun and relaxed way. All welcome.

## ASSEMBLY ROTA

	C Site	L Site
Monday	Brunel	Lawrence
Tuesday	Hawkins	Spencer
Wednesday	Turing	Wilberforce
Thursday	as per calendar	as per calendar
Friday	Year 7	Year 11

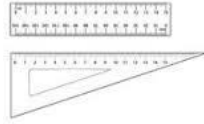
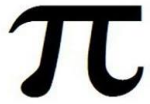
## Waitrose Blaby Tokens for Our Library

If you shop at Waitrose in Blaby, then you can help us raise funding towards improvements to our soft furnishings in Countesthorpe Leysland Library. Our Library is a fabulous asset at the College and used daily by our students.

We have been chosen along with two other successful projects to go forward to a vote in the Waitrose Blaby store where customers decide the outcome by voting for their favourite project each time they shop. Voting is taking place during September 2018.

To vote, you will need to make a purchase within store of any value and you will receive one token per transaction - if you are not given a token then please ask for one, don't forget that every token helps!





# MATHEMATICS

## AFTER SCHOOL SESSIONS

For **KS3**, **KS4** and **KS5** from 3 pm to 4 pm

**Tuesday**

**KS5** with **LWI/JLA** in **M13L**

**KS4** Drop in with **SHO/SBA** in **M2L**

**KS3** Drop in with **PSC/NPA** in **M7L**

**Thursday**

**KS5** with **LWI/TIO** **M13L**

**KS4** Drop in with **DPA/CTI** in **M3L**

**KS3** Drop in with **EYA/MDA** in **M6L**





## **Nominations are open for the Blaby District Local Sports Alliance Sports Awards 2018**

Blaby District Council Local Sports Alliance Sports Awards **ARE BACK AGAIN.**

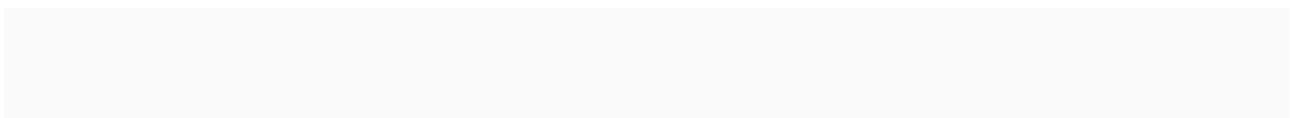
Local residents, clubs, groups and schools are encouraged to recognise the achievements of the community by completing a nomination form for one or more of the categories, which are:

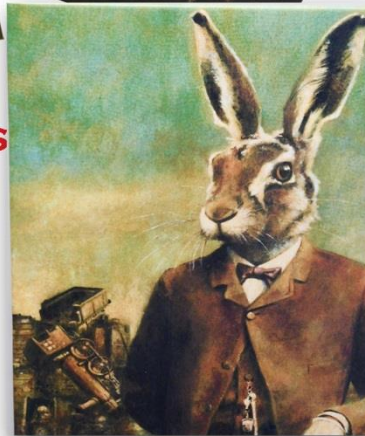
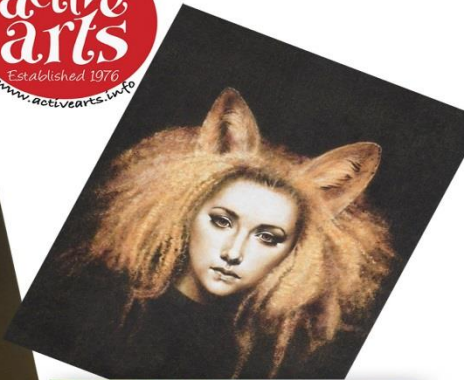
- Volunteer of the Year
- Coach of the Year
- Team of the Year (16+)
- Young Team of the Year
- Sports Person of the Year (16+)
- Sports Person (with a disability) of the Year (16+)
- Young Sports Person of the Year (under 16)
- Young Sports Person (with a disability) of the Year (under 16)
- Active 4 Life - Health & Wellbeing Award
- Blaby LSA Special Recognition Award

Nominees cannot nominate themselves but can be nominated by a parent/guardian. Nominees of all abilities, gender, race and age (within the criteria) are encouraged to be nominated.

Full details are available on the Blaby District Council Website.

**The nominations can be made between Monday 1<sup>st</sup> October and Thursday 1<sup>st</sup> November 2018.**





**MICHAEL THOMAS**  
ONE MAN EXHIBITION

*Week long beginning  
September 24th 2018*

*Cards, T Shirts,  
Book covers  
Prints & Commissions*

**COUNTESTHORPE LIBRARY**

MONDAY - 2.00PM TO 7.00PM  
WEDNESDAY - 8.00AM TO 12.00  
FRIDAY - CLOSED

TUESDAY - 10.00AM TO 2.00PM  
THURSDAY - 2.00PM TO 7.00PM  
SATURDAY - 9.00AM TO 2.00PM

Our new season programme is out now and available on our website  
[www.activearts.info](http://www.activearts.info) If you would like a printed copy of the programme then  
please send an email to [active.arts2010@gmail.com](mailto:active.arts2010@gmail.com) with an address and a  
copy will come flying your way.



[www.activearts.info](http://www.activearts.info)



[active.arts2010@gmail.com](mailto:active.arts2010@gmail.com)



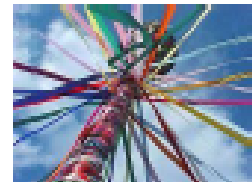
# Family Arts Day

**Saturday 13<sup>th</sup> October – 10.30 a.m. to 2.30 p.m.  
Countesthorpe Leysland Community College, LE8 5PR**

Fun for all the family, just £1 per person entrance fee, to come along and take part in a range of activities, including:

- + Arts and Crafts
- + Drop-in drawing fun
- + Archery and Golf
- + Master Gardeners
- + Woodland crafts

Back again this year we have Maypole dancing with Geoff Weston:



11.00 a.m. to 11.45 a.m. – Fun for everyone  
12.00 midday to 12.30 p.m. – Easy Maypole Dances  
1.00 p.m. – 2.00 p.m. - Advanced Maypole

Have fun painting a topical still life in acrylics with Blaby Society of Artists



Balloon models (from 12.30 p.m.) - £2.50 per person  
Face painting - £2.50 per person  
Make a printed fabric gift bag - £1 per person



**New this year come along and try a balloon modelling workshop with  
Smudgy the Clown – fun for all the family (ages 7 and upwards)**

Workshops cost £2.50 per person and run every 40 minutes at 10.30 a.m., 11.10 a.m.  
and 11.50 a.m. and last approximately 30 minutes

Please book your place by calling 07595 704761 or email [showm@clcc.college](mailto:showm@clcc.college)



**Light Refreshments available all day**



**mastergardener**  
Local advice and support growing food





# Safe and sound together



## Free family event - everyone welcome (aged 12+)

**When:** Saturday 6 October 2018  
Registration 9.15am for  
9.45am start to approx 2pm

**Where:** Leicestershire Police Headquarters,  
Training Block, Enderby,  
Leicester, LE19 2BX.

What to  
expect?

DMU choir (as seen on  
Britain's Got Talent 2018)

Free lunch provided

Celebrate Safely campaign

Friends Against Scams

*Places are limited and must be booked in advance.  
Bookings and lunch choice must be made by  
Monday 24th September 2018.*

✉ [safeandsound@ageukleics.org.uk](mailto:safeandsound@ageukleics.org.uk)

☎ 0783 709 1023



Leicestershire  
Police  
Protecting our communities





**GoLearn!**  
Leicestershire Adult Learning Service



# Learning for Confidence and Better Mental Health



Would you like to:

- **Boost your confidence?**
- **Learn new skills and practice old ones?**
- **Meet new people?**
- **Make positive changes?**

**FREE**

**Starts Thursday 27<sup>th</sup> September 10am to 12pm at Enderby Adult Learning Centre**

**Townsend Road, Enderby, Leics. LE19 4PG**

**Ring our central enrolment team for more information**

**CONTACT US FOR MORE INFORMATION AND TO ENROL**

Call **0116 305 0820** or **FREEphone 0800 988 0308**

[leicestershire.gov.uk/GoLearn](http://leicestershire.gov.uk/GoLearn)

 [/LeicsGoLearn](https://www.facebook.com/LeicsGoLearn)

