

CLCC WEEKLY BULLETIN

<p>Monday 4th December</p>	<p>All Day Lunchtime Lunchtime 15.00-16.00 15.00-16.00 15.15-16.15</p>	<p>Santander Volunteers working in the nursery & college gardens Year 7 Football – Leysland Site (DBU) Music Tech Club – MU3C Riders Basketball (all years) – Countesthorpe Gym Dance Club at Countesthorpe Site (all years)(AHU)Year 8 Girls Staff Singing Club – music rooms</p>
<p>Tuesday 5th December</p>	<p>8.30-2.30 Period 1 Lunchtime Lunchtime 15.00-16.00 15.00-16.00 15.00-16.00 15.00-16.00 15.00-16.00 15.00-16.15 15.30-17.00</p>	<p>LAD's Day (DBU) Tutor Period * Discovery & Impact Christian Club Chemistry Olympiad - Y13 – S04C Homework Club – IT3C – open to all years Orchestra (MU2C) Further maths (top set year 11 only) – M4L BTEC Dance Club – Countesthorpe Site (Yrs 10-13) (AHU) KS3 only – Develop your own IT Apps (IT1C) Duke of Edinburgh Silver Awards - HUBC Year 8 Boys Basketball vs Lutterworth High (home) (NWI)</p>
<p>Wednesday 6th December</p>	<p>Lunchtime Lunchtime 15.00-16.00 15.15-17.00</p>	<p>Music Theory – drop in session Music Tech Club – Music block Years 8&9 Trampolining at Countesthorpe (AHU/SMA) Year 8 Girls Basketball Tournament @ CLCC (KMC)</p>
<p>Thursday 7th December</p>	<p>Lunchtime Lunchtime 15.00-16.00 15.00-16.00 15.00- 14.45-17.00 15.00-16.00 15.00-16.00 15.00-16.00 15.15-17.00</p>	<p>Musical Theatre Theatre Tech Club – CCC Theatre Homework Club – IT3C – open to all years Year 11 GSCE Drama studies rehearsals Choir (MU2C) Year 12 & 13 Chemistry Support Drop in Session – S3C Years 7,8 &9 girls football training – Countesthorpe (BMA/KMC) Year 7&8 Rugby training at Countesthorpe (Phil) Year 7 Basketball training – Leysland (NWI) Year 7 Girls Basketball Tournament Countesthorpe Site (NRO)</p>
<p>Friday 8th December</p>	<p>15.00- 15.00-17.05 15.00-</p>	<p>Board game club – invite only Film Club – Countesthorpe Site – Minions Staff Football</p>

*** The Discovery & Impact Christian Lunch Group (more info)**

Discovery meets every Tuesday lunchtime in Leysland Meeting Room for those students having lunch at Leysland and then in SF5 for students having a Countesthorpe lunchbreak. Come and join us for games, discussion and to explore the Christian faith in a fun and relaxed way. All welcome.

Note for Staff – The College is once again participating in the LOROS Collection box scheme, so instead of sending Christmas cards to each other, a donation can be made to LOROS – the boxes will be in each reception area.

Please See the Assembly Rota for all years groups below

2017/2018

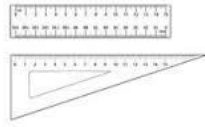
ASSEMBLY ROTA

WEEK 1	MONDAY	TUESDAY	WEDNESDAY	THURSDAY	FRIDAY
C - SITE	7	8	9	12 and 13	
L - SITE	7	8	11	10	

WEEK 2	MONDAY	TUESDAY	WEDNESDAY	THURSDAY	FRIDAY
C - SITE	ATTENBOR	BRUNEL	HAWKINS	TURING	
L - SITE	LAWRENCE	SPENCER	WILBERFOR		

This information is also available on the College website.

π



MATHEMATICS

AFTER SCHOOL SESSIONS

For **KS3**, **KS4** and **KS5** from 3 pm to 4 pm

Tuesday

KS5 with **LWI** in **M13L**

KS4 Drop in with **SBA** in **M11L**

KS3 Drop in with **RCA** in **M8L**

Thursday

KS5 with **LWI** **M13L**

KS4 Drop in with **DCU** in **M9L**

KS3 Drop in with **ZGA** in **M1L**





Wear a Christmas Jumper to school on Friday 15th December for Save The Children's National Christmas Jumper Day.

Donate £2.00 to wear your festive jumper which will be donated to Save The Children organisation.

Please remember to wear your school uniform ie skirts/trousers on the bottom.



Turner Education Foundation

Grants of £100 are available to previous students from Countesthorpe Leysland Community College

If you have a child that attended Countesthorpe Leysland Community College and has now left to take up an apprenticeship or go on to study at University then they could be eligible for a grant of £100 from the Turner Education Foundation towards books and other resources.

To make an enquiry and ask for an application form please email Mrs Jean Smart at jeansmart63@icloud.com

The closing date for completed applications is Tuesday December 5th 2017.



 *Give a little this Christmas* 



We will be collecting items to donate to **Lutterworth & Villages Foodbank**, our local **Foodbank**, which has a Distribution Centre in **Countesthorpe** as we thought it would be a nice way to unite across **Countesthorpe Leysland Community College**.

Please bring your item(s) to your tutor **before Friday 8th December 2017**

We need **IN-DATE, NON-PERISHABLE** goods: including Toiletries, Tinned ham, Sandwich spreads, Snack Bars, Laundry items, Size 6 Nappies, Coffee, Instant Mash, Custard etc.

Please see the list for more items.



Twitter: @LuttFoodBank

Facebook: Lutterworth and Villages Foodbank

www.lutterworthvillages.foodbank.org.uk

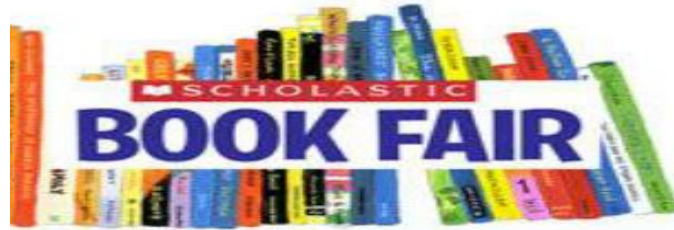


Urgent items needed for the Foodbank Collection:

All items to be in date, no fresh or frozen please.

Instant mash (180g)
Tinned ham / corned beef (200-300g)
Small tinned fruit (up to 350g)
Rice pudding (400g)
Instant Custard
Instant drinking Chocolate (made with Water)
Bottled Squash (750ml – 1 litre)
Long life fruit juice (not chilled)
Jam
Instant snack noodles
Deodorant (male & female)
Shaving foam
Washing powder (small)
Washing-up liquid
Dog and cat food (400g tins or pouches)
Spaghetti in sauce
Cheese crackers
Christmas pudding
Chocolate snack bars
Coffee
Toiletries – shampoo/conditioner/shower gel/toothpaste/toothbrushes
Feminine hygiene products
Supermarket carrier bags (long life)





SCHOLASTIC HALF PRICE BOOK FAIR

6th December - 12th December

CLCC library at lunch

New: David Walliams Bad Dad just £4.50

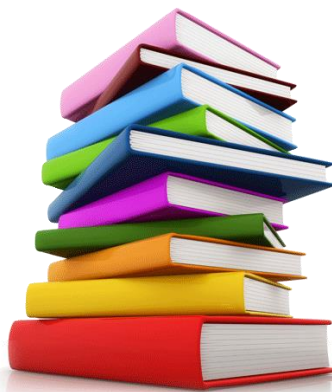
New: Diary of a Wimpy Kid Getaway just £4.50

New: Tom Gates Epic just £4.00

New: Dork Diaries Crush Catastrophe just £4.00

PLUS LOTS MORE

CASH ONLY



H U N C O T E



COMMUNITY CINEMA

@BlabyDC
 /BlabyDC
www.blaby.gov.uk

0116 275 0246
www.huncotepavilion.co.uk

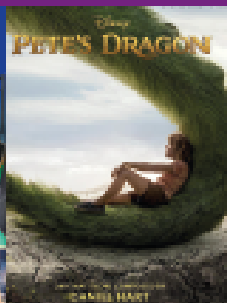
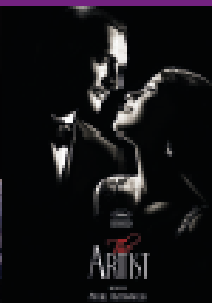
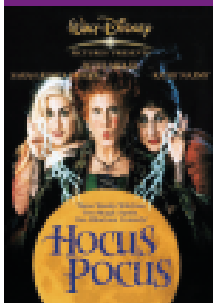
Screenings will take place in the meeting room at The Pavilion Leisure Centre, Sportsfield Lane, Huncote, LE9 3BN. The meeting room is located upstairs and is accessible by stairs or our lift.

Our films run monthly and are priced at £4.00 per ticket.

BOOKING IS ESSENTIAL, call 0116 275 0246 or for further information by emailing the Arts Development Service: leisure@blaby.gov.uk.

Refreshments are available to purchase from the café.

Soft play area available for children before/after the screenings, free of charge. Toilets with baby changing facilities.



HOCUS POCUS

Wednesday 18th October

10.30am | PG | 1h 36min | Comedy, Family, Fantasy

After three centuries, three witch sisters are resurrected in Salem, Massachusetts on Halloween night, and it is up to two teenagers, a young girl, and an immortal cat to put an end to their reign of terror once and for all.

IT'S A WONDERFUL LIFE

Tuesday 28th November

2.00pm | U | 2h 10min | Drama, Family, Fantasy

An angel is sent from Heaven to help a desperately frustrated businessman by showing him what life would have been like if he had never existed.

THE NIGHTMARE BEFORE CHRISTMAS

Saturday 2nd December

2.00pm | PG | 1h 16min | Animation, Family, Fantasy

Jack Skellington, king of Halloween Town, discovers Christmas Town, but his attempts to bring Christmas to his home cause confusion.

THE ARTIST

Tuesday 16th January

2.00pm | PG | 1h 40min | Comedy, Drama, Romance

A silent movie star meets a young dancer, but the arrival of talking pictures sends their careers in opposite directions.

SING

Wednesday 14th February

10.30am | U | 1h 48min | Animation, Comedy, Family

In a city of humanoid animals, a hustling theatre impresario's attempt to save his theatre with a singing competition becomes grander than he anticipates even as its finalists' find that their lives will never be the same.

PETE'S DRAGON

Saturday 10th March

2.00pm | PG | 1h 42min | Action, Adventure, Comedy

The adventures of an orphaned boy named Pete and his best friend Elliot, who just so happens to be a dragon.

Limit of 40 seats available. Booking is essential.

